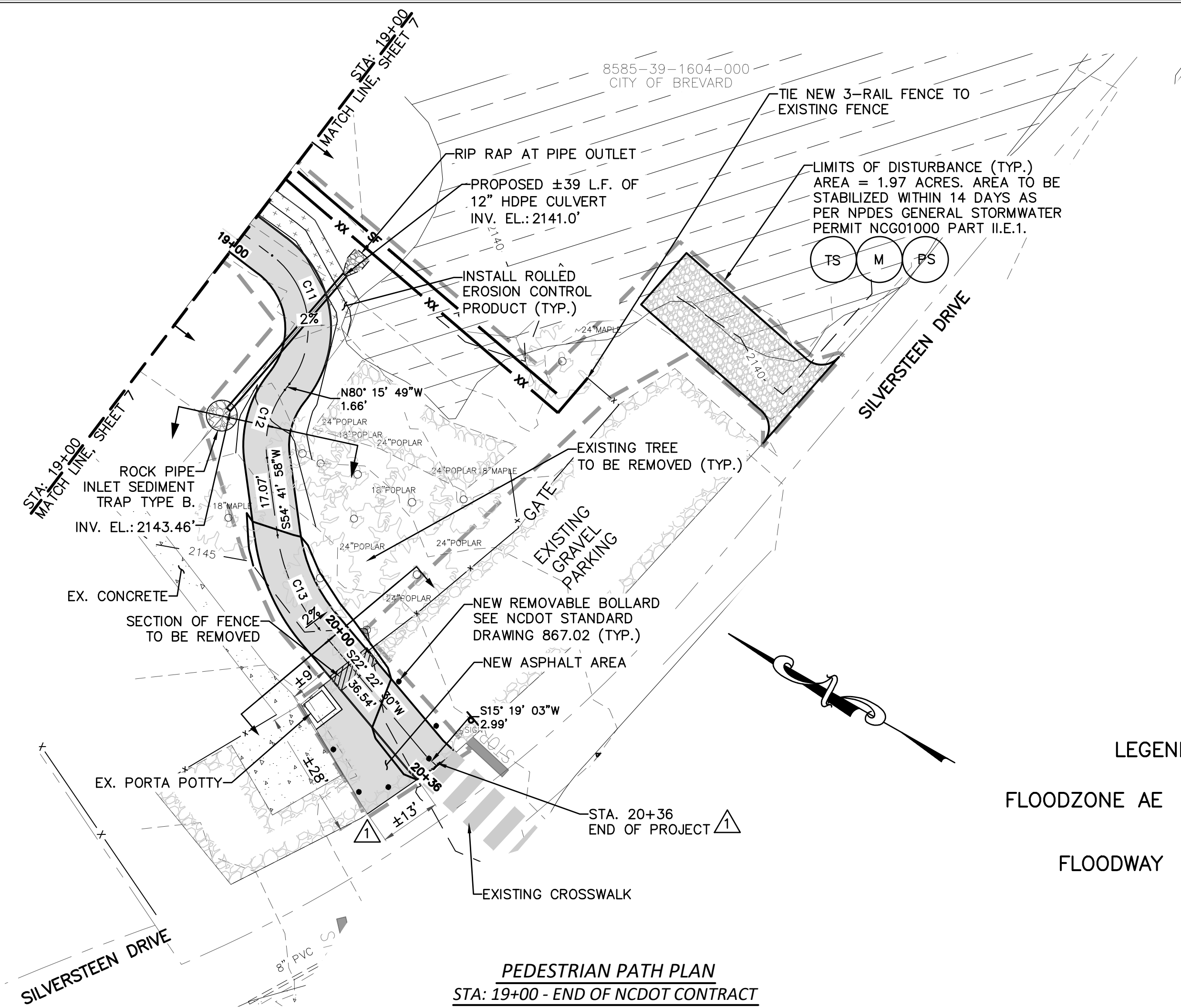
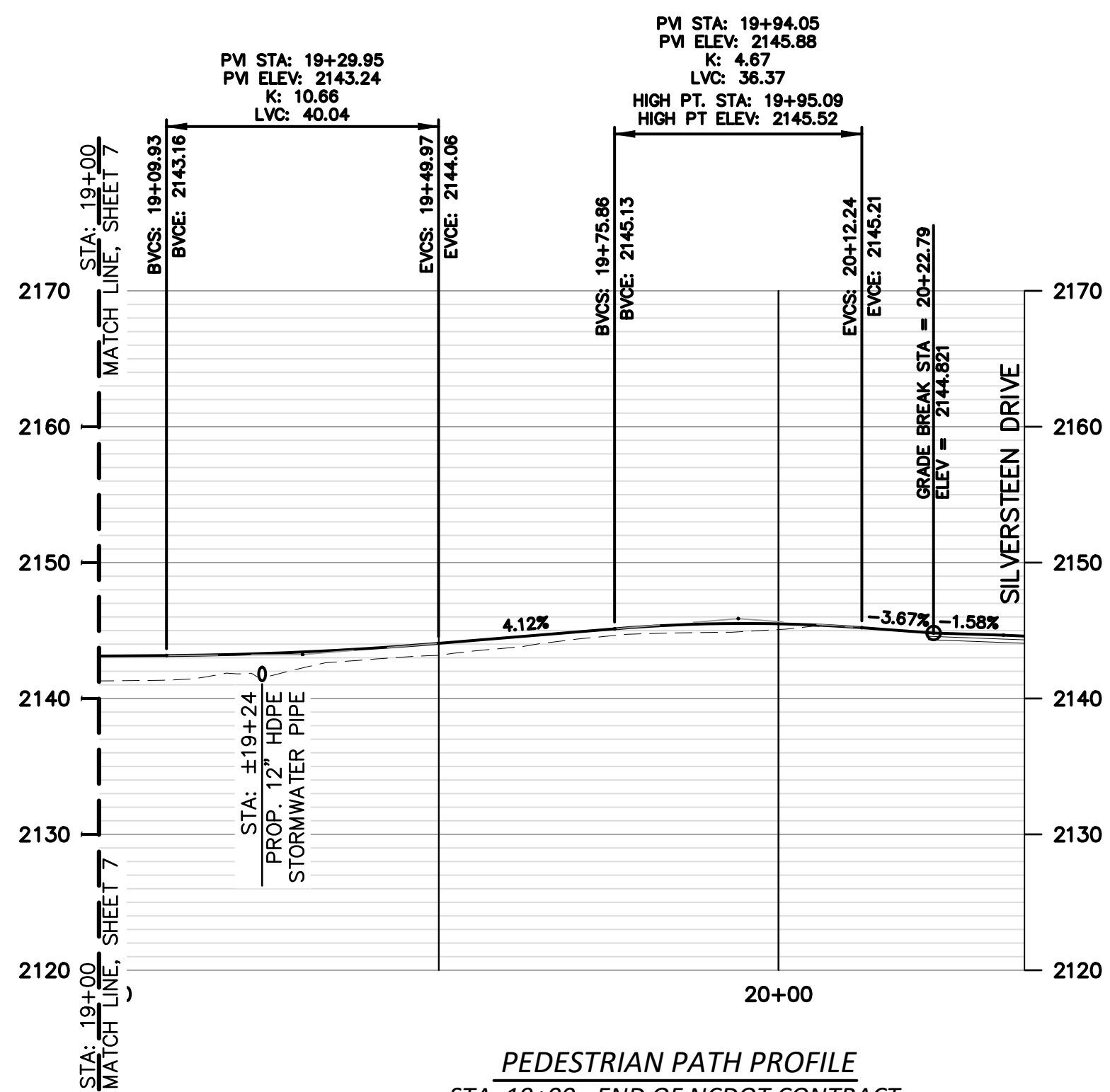


THIS DRAWING IS THE PROPERTY OF SUMMIT ENGINEERING GROUP, INC. AND IS NOT TO BE REPRODUCED OR TRANSMITTED IN ANY FORM OR BY ANY MEANS, ELECTRONIC OR MECHANICAL, INCLUDING PHOTOCOPYING, RECORDING, OR BY ANY INFORMATION STORAGE AND RETRIEVAL SYSTEM, WITHOUT THE WRITTEN PERMISSION OF SUMMIT ENGINEERING GROUP, INC. AND IS NOT TO BE USED ON ANY OTHER PROJECT.

N:\PROJECTS\22017_BREVARD - BIKE PATH\DWG\22017-BASE_TANNERY_NCDOT.DWG 5/28/2023 9:32:50 AM



PEDESTRIAN PATH PLAN
 STA: 19+00 - END OF NCDOT CONTRACT
 SCALE: 1" = 20'-0"

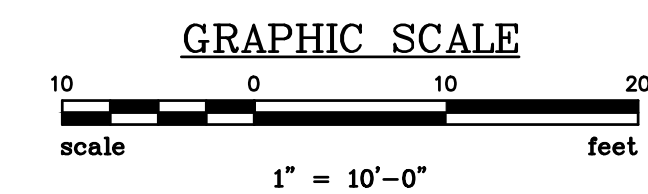
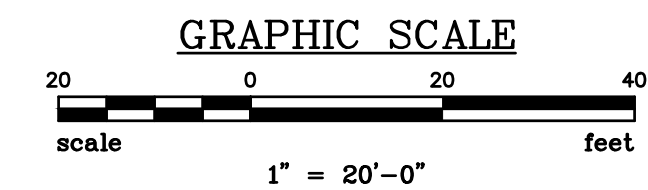


PEDESTRIAN PATH PROFILE
 STA: 19+00 - END OF NCDOT CONTRACT
 HORIZONTAL SCALE: 1" = 20'-0"
 VERTICAL SCALE: 1" = 10'-0"

PROPOSED BIKE PATH - CURVE BEARINGS AND DISTANCE				
CURVE	RADIUS	ARC LENGTH	CHORD BEARING	CHORD LENGTH
C13	40.00'	22.57'	S38°32'14"W	22.27'
C14	40.00'	56.74'	S35°02'51"E	52.10'
C15	40.00'	35.79'	S27°02'23"E	34.61'
C16	150.00'	96.13'	S27°18'42"E	94.49'

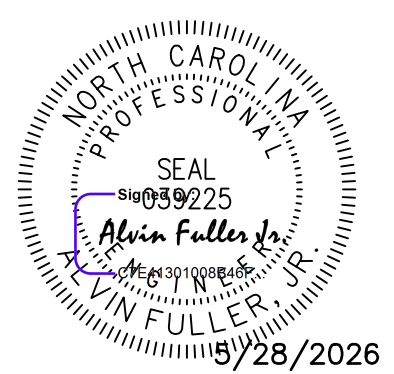
LEGEND

- FLOODZONE AE
- FLOODWAY



REVISIONS	
NO.	DESCRIPTION

APPROVALS	
PROJECT ENG.	DATE
AF	1/14/25
DESIGNED BY:	MFC
AF	1/27/26
DRAWN BY:	MFC
JDK	
CHECKED BY:	
MFC	
APPROVED:	AF



SUMMIT ENGINEERING GROUP, INC.
 ENGINEERS • PLANNERS • SURVEYORS
 9601 Warren H. Abernathy Hwy.
 Spartanburg, SC 29301
 (864)949-1111

PEDESTRIAN WALKWAY PLAN AND PROFILE
 SHEET TITLE
 DATE: DEC. 2023 SCALE: AS SHOWN

ESTATOE TRAIL PHASE III (TANNERY PROPERTY) FOR THE CITY OF BREVARD, NC
 PROJECT
 TRANSLVANIA COUNTY NORTH CAROLINA

N.B. NO.
 REF.
 PROJECT NO.
22017

SHEET
8
 OF

FILE: 22017_Base